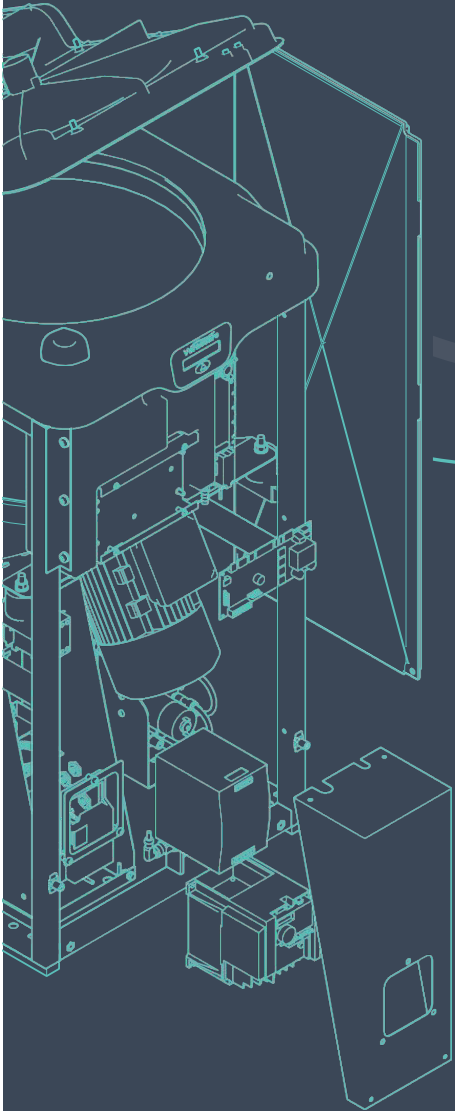


# Vernacare VORTEX AIR

User Guide



Version 1.0

 **EBOS**  
HEALTHCARE

ESSENTIAL TO HEALTH

## Care & Maintenance

### Daily Routine

Recommended cleaning procedure for Vortex Air using Azo™ Detergent Wipes or detergent and water.

1. With the lid open, clean the inside surface of the lid seal and top cover using IPA based wipes or detergents with warm water. Please dispose of wipes and cloths once finished.
2. Close the lid and then clean and dry the front panel of the Vortex Air.
3. Keeping the lid closed, continue to wipe the top surface with warm water and detergent then dry with a dry wipe.
4. Wipe over the control panels with a damp (not wet) cloth and dry. NB. Drying each surface after cleaning is vitally important to help prevent microbial growth.
5. Finally start the Vortex Air to run one cycle without any disposable single-use products to flush the hopper through and clean the inside of the macerator.

## Operation

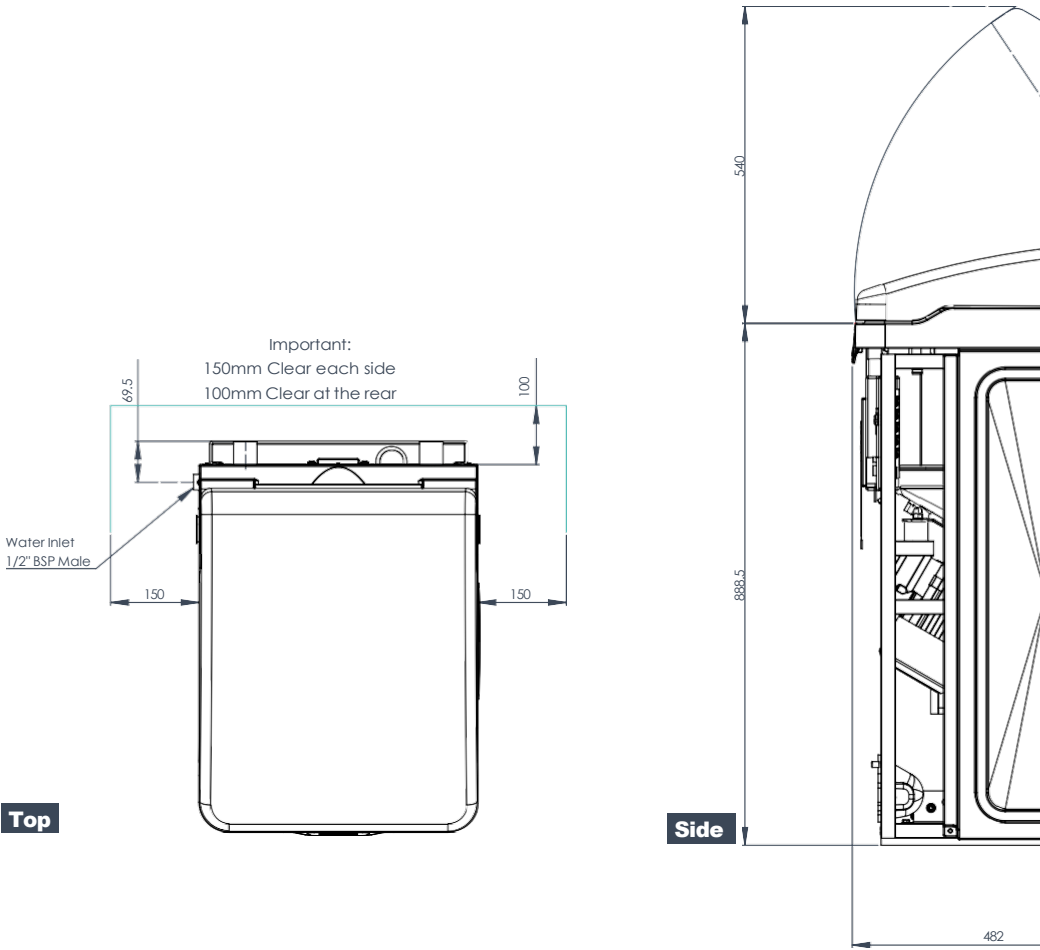
- I. Approach the macerator and open the automatic lid by placing your foot in the footwell.
- II. Place the single-use disposable pulp products into the macerator, please do not exceed the following maximum capacities:
  - x4 Medium sized pulp products, such as bedpans and bottles.
  - x2 large sized pulp products, such as washbowls.
  - x6 Small sized pulp products, such as bottle stops and kidney bowls.
- III. To close the lid, insert your foot back into the footwell, the lid will automatically close and commence the cycle. The progress of the cycle will be displayed as a percentage whilst the cycle is underway. \*Note that if the machine is not in auto-start mode, you will have to press the start button to commence the cycle.
- IV. When the cycle is complete the macerator will make an audible 'beep'. After this the service and cycle count will be displayed followed by the 'insert foot to open' prompt. The macerator is now ready for the next cycle.

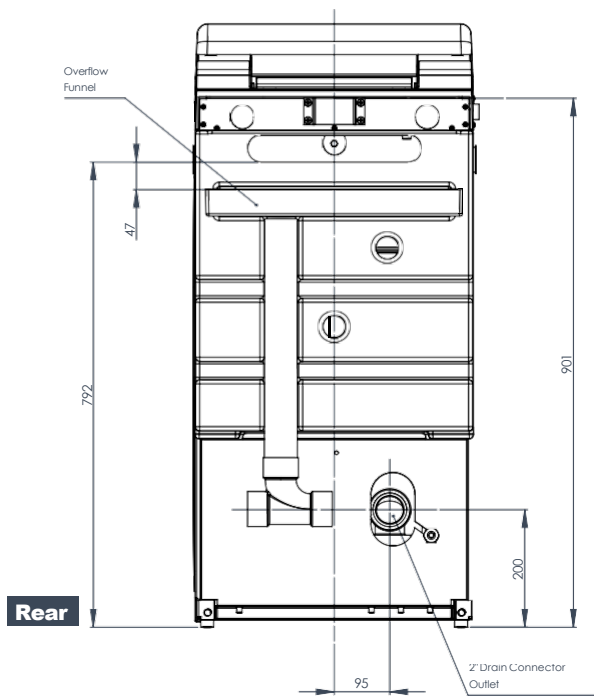
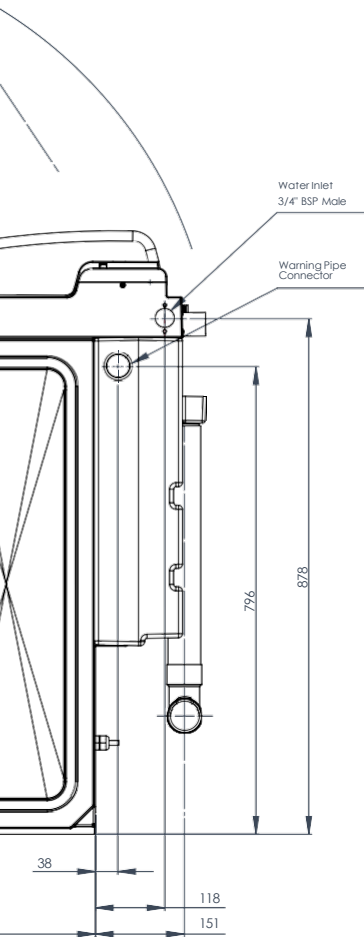
## Dos and Don'ts

- ✓ **DO** run a cycle after each loading for infection control purposes.
- ✓ **DO** run a cleansing cycle once a day without products.
- ✓ **DO** load a maximum of 6 small, 4 medium or 2 large single-use disposable pulp products.
- ✗ **DON'T** allow single-use disposable products to 'nest' inside one another inside the macerator.
- ✗ **DON'T** put non-maceratable wipes, dressings, plastic containers, incontinence pads, metal objects, cotton wool, sanitary or paper towels, plastic gloves, aprons, syringes or any other non-maceratable wipes into the Vortex Air.

## Dimensions and Connection Points

Please note the Vortex Air can be easily installed in an area which previously housed a Vortex+ macerator. No reconfiguration of the drain and connection points is usually required.





## Troubleshooting

By following the guidelines in this user manual, you will experience trouble-free service. However, you may occasionally experience minor problems such as:

### **Pulp particles in the bottom of the drum**

Run a cleaning cycle without single-use disposable products, then ensure that no more than four (4) disposable single-use products or two (2) disposable single-use wash bowl products are put in the Vortex Air at any one time.

### **Pulp particles remain in the lid call the Maintenance Department**

The lid spray may be blocked and it only takes a few minutes to clear.

### **The Display Panel displays 'BLOCKED DRAIN' and the Vortex Air will not start**

The output drain port may be blocked. To free it, pour a mixture of hot soapy water into the drum and wait for a few minutes. Try to run a cleaning cycle. If the blockage persists, call the Maintenance Department.

### **The Display Panel displays the deodoriser supply is low**

Please order Vernacare Deodoriser.

### **The Display Panel displays hopper full**

Open the lid to see if the hopper is clear. If blocked, isolate the machine and clear the blockage.

**IMPORTANT If any of the following problems occur, call the Maintenance Department immediately:**

- Water is coming up through the lid.
- The lid will not open/close.
- The Display Panel shows '**POWER FAIL**'.
- The Display Panel display shows the machine running but the Vortex Air is not working.



**Warning-under NO circumstances should the machine be dismantled or worked upon without first isolating the power display.**



## Notes

A series of horizontal dotted lines for taking notes.

EBOS HEALTHCARE:

300 Victoria Street,  
Wetherill Park,  
NSW 2164

Free Phone: 1800 269 534

Free Fax: 1800 810 257

Email: [customerservice@ebosgroup.com.au](mailto:customerservice@ebosgroup.com.au)

Online Ordering: [www.eboshealthcare.com.au](http://www.eboshealthcare.com.au)

WAREHOUSE LOCATIONS:

New South Wales:

300 Victoria Street,  
Wetherill Park,  
NSW 2164

Queensland:

Unit 2, 39 Distribution Street  
Motorway Business Park  
Larapinta  
QLD 4110

Victoria:

Unit 2A, 1508 Centre Road  
Clayton Business Park  
Clayton  
VIC 3168

Western Australia:

2/3 Ernest Clark Road  
Canning Vale  
WA 6155

South Australia:

75-83 Hardys Road  
Underdale  
SA 5032

Tasmania:

7A Pear Avenue  
Derwent Park  
TAS 7009



ESSENTIAL TO HEALTH