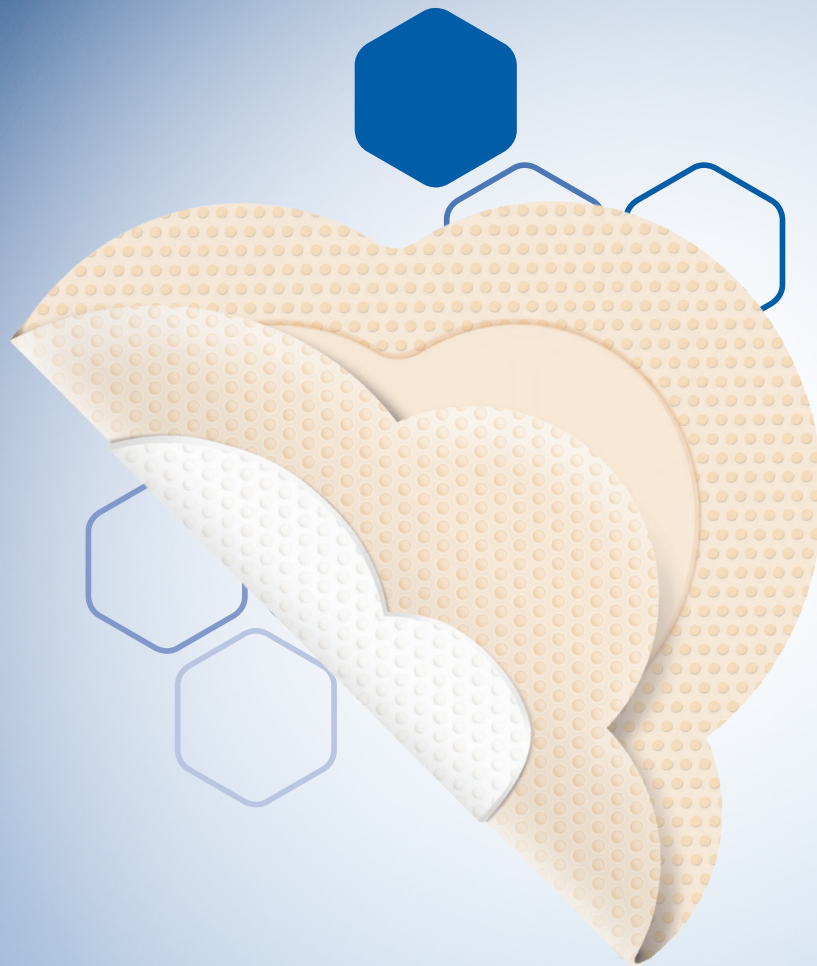




# Proximel<sup>®</sup>

Care. Closest to skin.



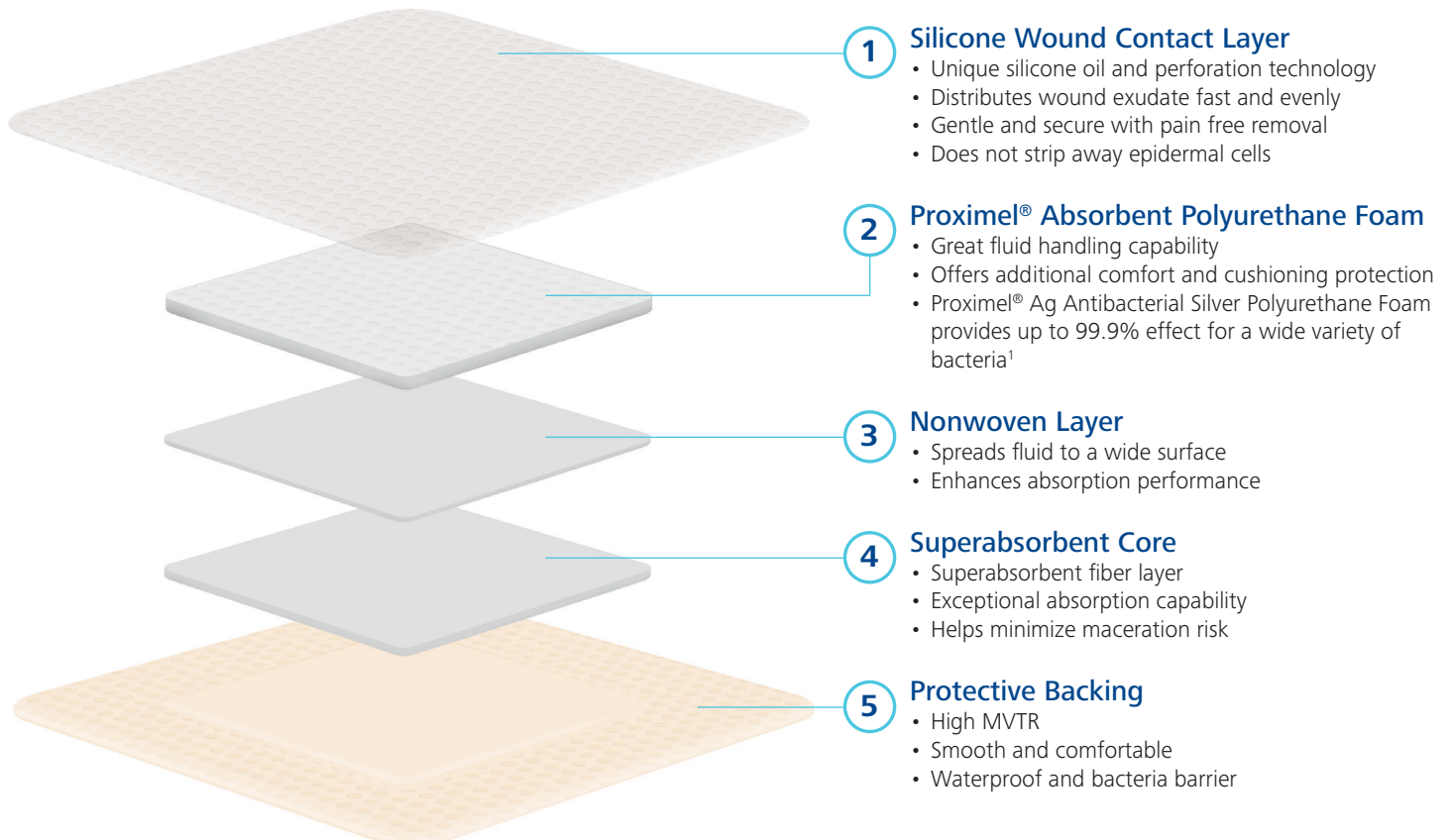
Proximel<sup>®</sup> helps you manage patient wounds easily, efficiently and with confidence.

# Proximel® and Proximel® Ag

Proximel® and Proximel® Ag silicone wound dressings feature a unique five-layer design that promotes healing and supports pressure injury prevention by quickly and effectively managing wound exudate while reducing and redistributing pressure at the injury site. Part of the HARTMANN family of wound care solutions, Proximel® and Proximel® Ag are versatile choices for a wide variety of care settings, prevention protocols and wound types.

By providing a sustained silver release over time, Proximel® Ag dressings help reduce wound healing time and offer up to 99.99% antimicrobial effect against a wide range of pathogens.<sup>1</sup> Both dressing versions can be worn for up to 7 days as wound healing progresses from heavy to moderate to light levels of exudate.

## A five-layer design that improves upon traditional silicone dressings

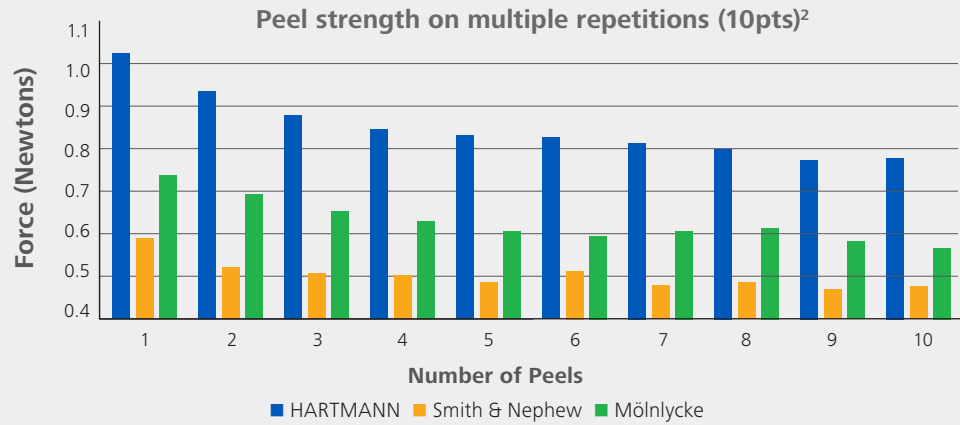


Scan here for a video on how to apply  
Proximel®/Proximel® Ag and  
Proximel® Sacral/Proximel® Ag Sacral

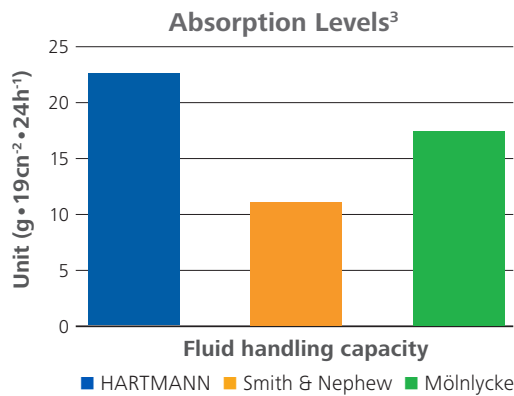
# Its time for a new silicone dressing



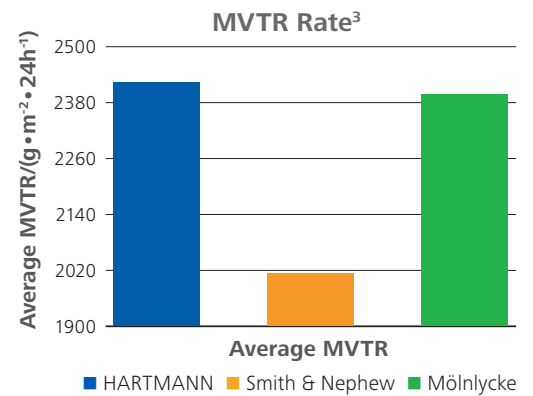
Proximal's distinctive properties allow you to confidently **lift** and **reposition** the dressing while reducing the risk of adherence failure.



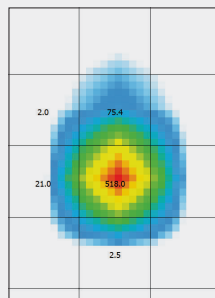
Superabsorbent core supports **fast absorption** and helps minimize maceration risk.



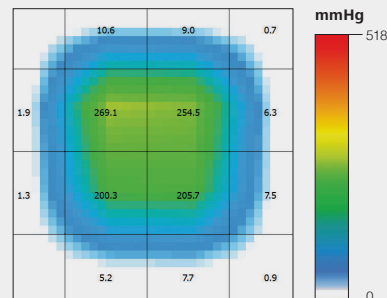
**High MVTR rate** supports good moisture balance.



**Reduces and redistributes pressure** across the surface to reduce both peak and overall level of force.



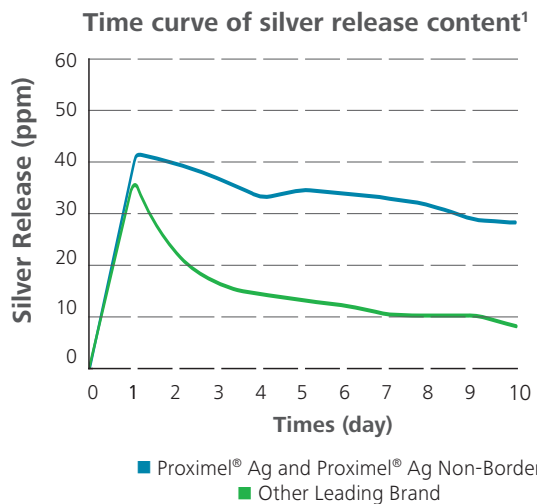
Pressure Map without Wound Dressing<sup>4</sup>



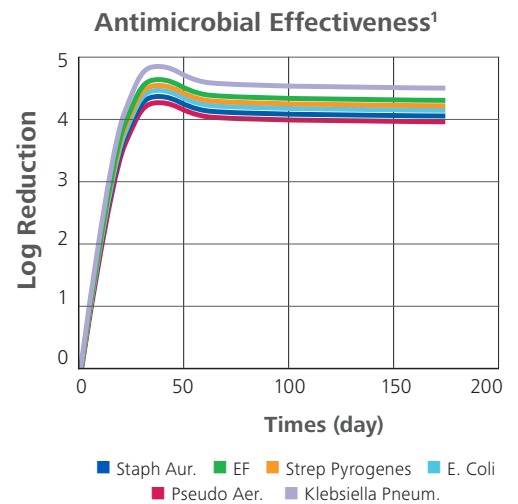
Pressure Map with Proximal<sup>®</sup> Silicone Foam Dressing<sup>4</sup>



Proximal<sup>®</sup> Ag **sustained silver release** ensures effectiveness over 7 days.



Proximal<sup>®</sup> Ag is effective against **key pathogens**.

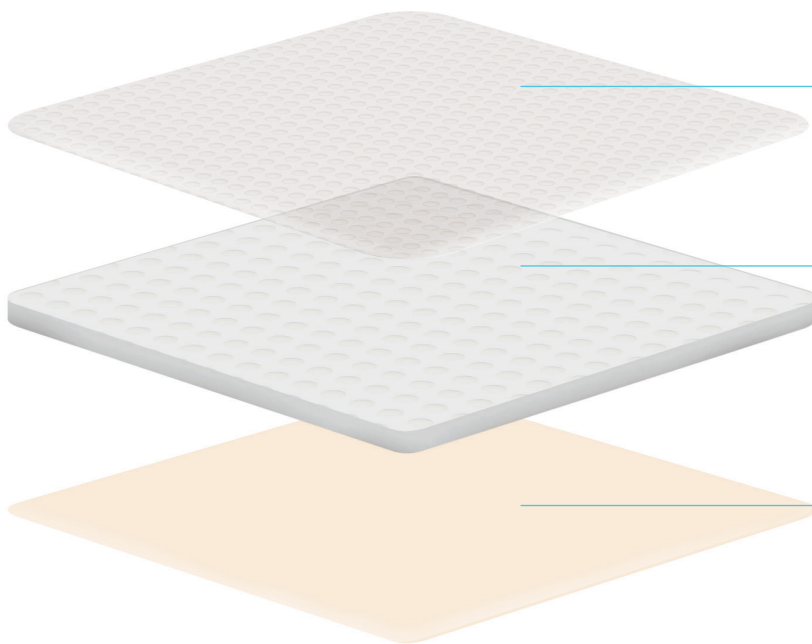
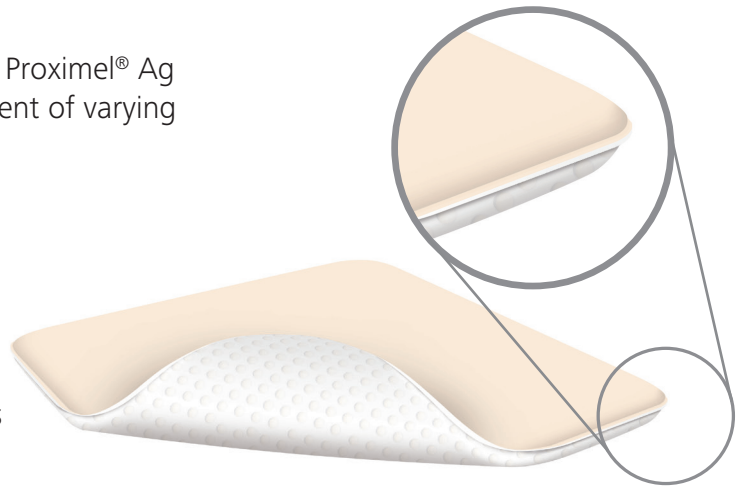


# Proximel® Non-Border and Proximel® Ag Non-Border

Proximel® Non-Border and Proximel® Ag Non-Border silicone wound dressings feature a three-layer design with a unique tapered edge that allows the dressing to lay smooth around wound edges while helping to prevent exudate seeping. The silicone adhesive helps the dressing stay in place during bandage wrapping, is gentle on the skin, and is easily removed.

Its unique design makes Proximel® Non-Border and Proximel® Ag Non-Border the ideal dressing choice for management of varying levels of exudate and for use under compression.

By providing a sustained silver release over time, Proximel® Ag dressings help reduce wound healing time and offer up to 99.99% antimicrobial effect against a wide range of pathogens.<sup>1</sup> Both dressing versions can be worn for up to 7 days as wound healing progresses from heavy to moderate to light of exudate.



- 1 Silicone Wound Contact Layer**
  - Unique silicone oil and perforation technology
  - Distributes wound exudate fast and evenly
  - Gentle and secure with pain free removal
  - Does not strip away epidermal cells
- 2 Absorbent Polyurethane Foam**
  - Great fluid handling capability
  - Offers additional comfort and cushioning protection
  - Proximel® Ag Non-Border Antibacterial Silver Polyurethane Foam provides up to 99.9% effect for a wide variety of bacteria<sup>1</sup>
- 3 Protective Backing**
  - High MVTR
  - Smooth and comfortable
  - Waterproof and bacteria barrier



Proximel® Ag Non-Border **sustained silver release** ensures effectiveness over 7 days.



Proximel's distinctive properties allow you to confidently **lift and reposition** the dressing while reducing the risk of adherence failure.



**High MVTR rate** supports good moisture balance.



Superabsorbent core supports **fast absorption** and helps minimize maceration risk.



Scan here for a video on how to apply Proximel® Non-Border and Proximel® Ag Non-Border

# A Versatile Solution

Proximel® Family of Silicone Dressings:  
An ideal choice for use throughout  
various care settings for both prevention  
and treatment.<sup>5</sup>



Order Number	Dressing Size	Pad Size	Selling UOM	Dressings per Box	HCPCS Code
<b>Proximel® Silicone Foam Dressings - Border</b>					
14100000	3" x 3" / 7.6cm x 7.6cm	1.8" x 1.8" / 4.5cm x 4.5cm	Box	10	A6212
14200000	4" x 4" / 10cm x 10cm	2.4" x 2.4" / 6.2cm x 6.2cm	Box	10	A6212
14300000	5" x 5" / 12.7cm x 12.7cm	3.3" x 3.3" / 8.5cm x 8.5cm	Box	10	A6212
14400000	6" x 6" / 15.2cm x 15.2cm	3.75" x 3.75" / 9.5cm x 9.5cm	Box	5	A6212
14500000	Post-Op, 4" x 12" / 10cm x 30.5cm	2" x 9.4" / 5cm x 24cm	Box	5	A6213
14600000	Small Sacrum, 7" x 6.8" / 17.8cm x 17.3cm	4.9" x 4.7" / 12.5cm x 12cm	Box	5	A6212
14700000	Large Sacrum, 9.2" x 9.2" / 23.4cm x 23.4cm	6.7" x 6.5" / 17cm x 16.5cm	Box	5	A6213
14800000	Heel, 10" x 9.4" / 25.4cm x 23.9cm	7.5" x 6.9" / 19cm x 17.5cm	Box	5	A6213
<b>Proximel® Ag Silicone Foam Dressings - Border</b>					
15100000	3" x 3" / 7.6cm x 7.6cm	1.8" x 1.8" / 4.5cm x 4.5cm	Box	10	A6212
15200000	4" x 4", 10cm x 10cm	2.4" x 2.4" / 6.2cm x 6.2cm	Box	10	A6212
15300000	6" x 6" / 15.2cm x 15.2cm	3.75" x 3.75" / 9.5cm x 9.5cm	Box	5	A6212
15400000	Post-Op, 4" x 12" / 10cm x 30.5cm	2" x 9.4" / 5cm x 24cm	Box	5	A6213
15500000	Small Sacrum, 7" x 6.8" / 17.8cm x 17.3cm	4.9" x 4.7" / 12.5cm x 12cm	Box	5	A6212
<b>Proximel® Silicone Foam Dressings - Non-Border</b>					
15713100	4" x 4" / 10cm x 10cm		Box	10	A6209
15713101	4" x 5" / 10cm x 12cm		Box	10	A6210
15713102	4" x 8" / 10cm x 20cm		Box	5	A6210
15713103	6" x 6" / 15cm x 15cm		Box	5	A6210
15713104	8" x 8" / 20cm x 20cm		Box	5	A6211
15713105	Heel, 5" x 8" / 13cm x 20cm		Box	5	A6210
<b>Proximel® Ag Silicone Foam Dressings - Non-Border</b>					
15713117	4" x 4" / 10cm x 10cm		Box	10	A6209
15713118	6" x 6" / 15cm x 15cm		Box	5	A6210
15713119	8" x 8" / 20cm x 20cm		Box	5	A6211

HCPCS DISCLAIMER: HCPCS codes and home health consolidated billing codes provided by HARTMANN USA are intended as general guidelines only. HARTMANN USA does not guarantee coverage or reimbursement of any products. The customer must address all coverage and reimbursement issues (including correctness and accuracy of codes) with their individual payers. It is the customer's responsibility to ensure the accuracy and appropriateness of each claim the customer submits, in accordance with all applicable payer requirements.

<sup>1</sup> Data on file.

<sup>2</sup> Internal lab data test conducted with Proximel, Allevyn Gentle Border and Mepilex Border.

<sup>3</sup> Testing performed per BS EN 13726-2:2002.

<sup>4</sup> Simulated with steel ball, data on file.

<sup>5</sup> Emily Haesler, editor. National Pressure Ulcer Advisory Panel, European Pressure Ulcer Advisory Panel and Pan Pacific Pressure Injury Alliance. Prevention and Treatment of Pressure Ulcers: Quick Reference Guide. Perth: Cambridge Media; 2014.

Contact your local HARTMANN representative, or visit us at  
[www.hartmannusa.com](http://www.hartmannusa.com) for more information.

HARTMANN USA, Inc.  
Rock Hill, SC 29730  
1-800-243-2294

[www.hartmannusa.com](http://www.hartmannusa.com)

XLIT 2939 Rev. 1 (0121)



Going further  
for health