



 **kai industries co., ltd.**
1110, Oyana, Seki City, Gifu Pref., 501-3992, Japan
Phone: +81 (0) 575 28 5040
Fax: +81 (0) 575 28 6611
E-mail: info-ind@kai-group.com
www.kai-group.com/global/en/



Product specifications may change without notice.

 **kai Europe GmbH**
Kottendorfer Straße 5, 42697 Solingen, Germany
Phone: +49 (0) 212 23 23 80
Fax: +49 (0) 212 23 23 899
E-mail: info@kai-europe.com
www.kai-europe.com

KIM-000 1709/ 1709 K 3K1



KAI Dermatology Instruments



DISPOSABLE BIOPSY PUNCHES

Features

- Seamless stainless steel sharp cutting edge
- Ribbed handle for sure grip and control
- Size embossed on each punch for easy identification
- Wide range of sizes
- Sterile and ready to use
- Disposable

Clinical areas

- Dermatology
- Gynecology
- Podiatry

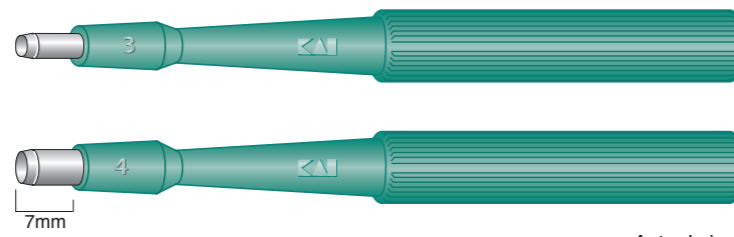


References : Manabu MAEDA, MD & Ph D Department of Dermatology, Gifu Prefectural General Medical Center.

Regular type



- 20 punches in a dispenser box
- 50 boxes per shipping carton



Actual size

REF NO.	SIZE			
BP-10F	1.0mm	○	BP-35F	3.5mm ○
BP-15F	1.5mm	○	BP-40F	4.0mm ○
BP-20F	2.0mm	○	BP-50F	5.0mm ○
BP-25F	2.5mm	○	BP-60F	6.0mm ○
BP-30F	3.0mm	○	BP-80F	8.0mm ○

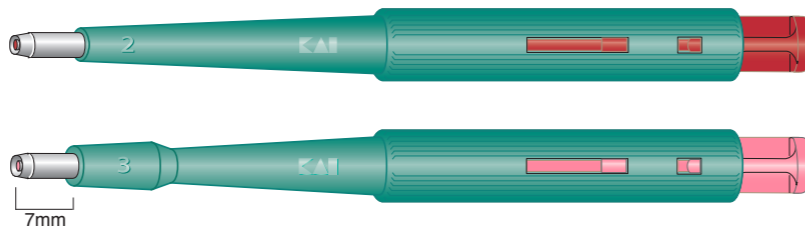
Plunger type

Internal Plunger System

Ejects lodged skin specimen inside the metal lumen of the punch

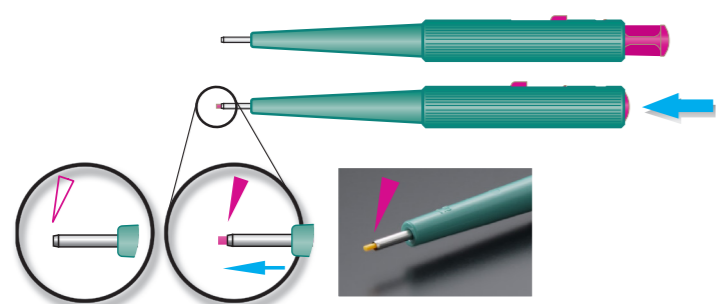


- 20 punches in a dispenser box
- 50 boxes per shipping carton



Actual size

Color Coding	REF NO.	SIZE	
	BPP-10F	1.0mm	○
	BPP-15F	1.5mm	○
	BPP-20F	2.0mm	○
	BPP-30F	3.0mm	○
	BPP-40F	4.0mm	○



DISPOSABLE DERMAL CURETTES

Features

- Stainless steel sharp cutting edge
- Size embossed on each curette for easy identification
- Wide range of sizes
- Sterile and ready to use
- Disposable

Used in the following minor skin surgical procedures

- Curettage of a basal cell carcinoma
- Curettage of a verruca
- Curettage of other benign neoplasms of the skin

Clinical areas

- Dermatology
- Surgery
- Podiatry
- Veterinary



A dermal curette biopsy technique for various dermatological diseases A punch (Trepan) biopsy technique for various dermatological diseases

References : Manabu MAEDA, MD & Ph D Department of Dermatology, Gifu Prefectural General Medical Center.



- 20 curettes in a dispenser box
- 20 boxes per shipping carton



Actual size

REF NO.	SIZE			
MK402	2.0mm	○	MK405	5.0mm ○
MK403	3.0mm	○	MK407	7.0mm ○
MK404	4.0mm	○		

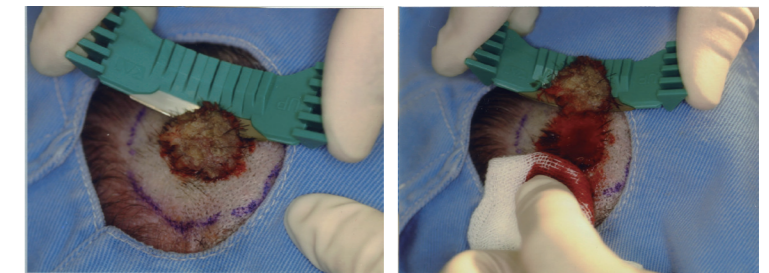
DISPOSABLE BIOPSI BLADE

Features

- Blade with sure grip handle for precise biopsy
- Sterile and ready to use
- Disposable

Clinical areas

- Dermatology
- Gynecology
- Podiatry



References : Manabu MAEDA, MD & Ph D Department of Dermatology, Gifu Prefectural General Medical Center.

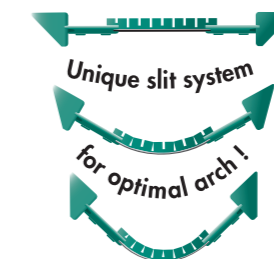


- 20 blades in a dispenser box
- 40 boxes per shipping carton



REF NO. BB-01

Actual size



Suitable for Saucerization

