

# Non-Healing Wound Rescue Pack

## PASS IT ON!

### PRESENTATION ASSESSMENT

Patient presents with a newly developed or deteriorating wound.

Consider potential underlying causes of the wound. Assess and document location, duration, size and tissue type. Use Flaminal as a first-line treatment for 2-4 weeks. If the wound responds positively, continue treatment.

Use caution for wounds below the ankle. Refer for assessment.

### SPECIALIST

- If a person has a limb-threatening or life-threatening wound issue, refer immediately to acute services and inform the wound specialist (according to local protocols and pathways).
- If no signs of improvement in 2-4 weeks, refer patient to a wound specialist.
- Follow up on referral after the number of days that are stated in your local guidelines if the patient has not been seen by a specialist clinician in the required timeframe.

### SOLVE IT

Complete a holistic assessment and address any obvious wound cause ie relieve pressure points, nutrition, co-morbidities.

Check if there are signs of local or spreading infection. If yes, refer to the wound specialist for review.

If needed, prescribe oral antibiotics as per the antibiotic stewardship guidelines. (Wound Infection Institute 2022).

### ON

Dress the wound as per guidance below. This is a simple pathway to guide wound management whilst the patient is waiting to be seen by the wound specialist.

#### Deterioration Wound

Signs and Symptoms:

- ↑ Exudate
- ↑ Pain
- ↑ Wound size

#### Improving Wound

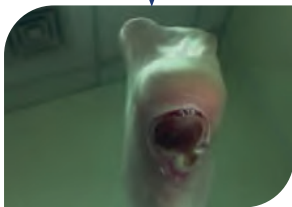
Signs and Symptoms:

- ↓ Exudate
- ↓ Pain
- ↓ Wound size
- ↓ Healthy granulating tissue

### Patient Presents with Non-Healing Wound

#### Assess Wound Tissue Type

#### Black/Necrotic



Keep wound dry until wound is assessed.

Apply low adherent dry dressing and refer to Specialist.

#### Yellow Slough



**Slight to moderately exuding wounds** = Apply Flaminal® Hydro in a 5mm thick layer and cover with an appropriate secondary dressing.

**Moderate to highly exuding wounds** = Apply Flaminal® Forte in a 5mm thick layer and cover with an appropriate absorbent secondary dressing.

Flaminal® can remain in place for 1-4 days depending on level of exudate (as long as gel structure remains intact).

Caution required for potential sinus tracts if depth of wound is unknown. If unsure, refer to a wound specialist.

#### Red/Granulating



#### Local Infection





# Non-Healing Wound Rescue Pack

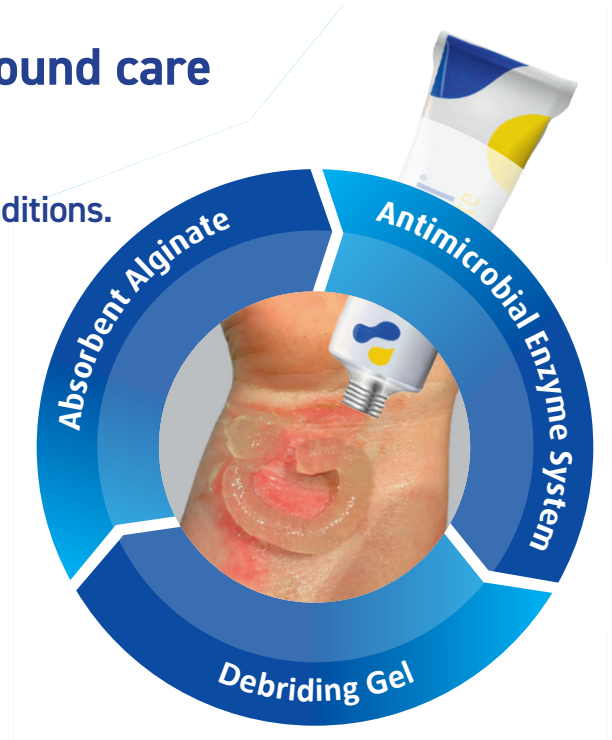
## Flaminal®: A different dimension of wound care

Intelligent wound care is versatile.

Supports fast wound healing by creating favourable conditions.

Flaminal® is a primary wound dressing with three main components that aid wound healing, avoiding the use of multiple products<sup>1,2,3</sup>

- ▶ Absorbent alginate
- ▶ Debriding gel
- ▶ Antimicrobial enzyme system



## Tailor made application.

User friendly wound treatment.

- ▶ Flaminal® is easy to apply for both the patient and healthcare professional making it ideal for self/ shared care.
- ▶ Suitable to apply for any wound shape or size.
- ▶ Ideal for difficult to dress areas.
- ▶ Always ensure there is a secondary dressing over the gel.



Directly from the tube



Directly onto the dressing pack



With a syringe



With a nozzle



With a spatula

## Ordering information.

EBOS Code	Description	UOM
AS14500	Flaminal Forte 50g	Each
AS14540	Flaminal Hydro 50g	Each



Flaminal® Hydro



Flaminal® Forte



FOR MORE INFORMATION CONTACT YOUR ACCOUNT MANAGER ON **FREephone 1800 269 534** OR VISIT [www.eboshealthcare.com.au](http://www.eboshealthcare.com.au)

ESSENTIAL TO HEALTH